

Classic Beige Exterior Style Floorplans

Lots 4, 8, 12



Lot 4 shown



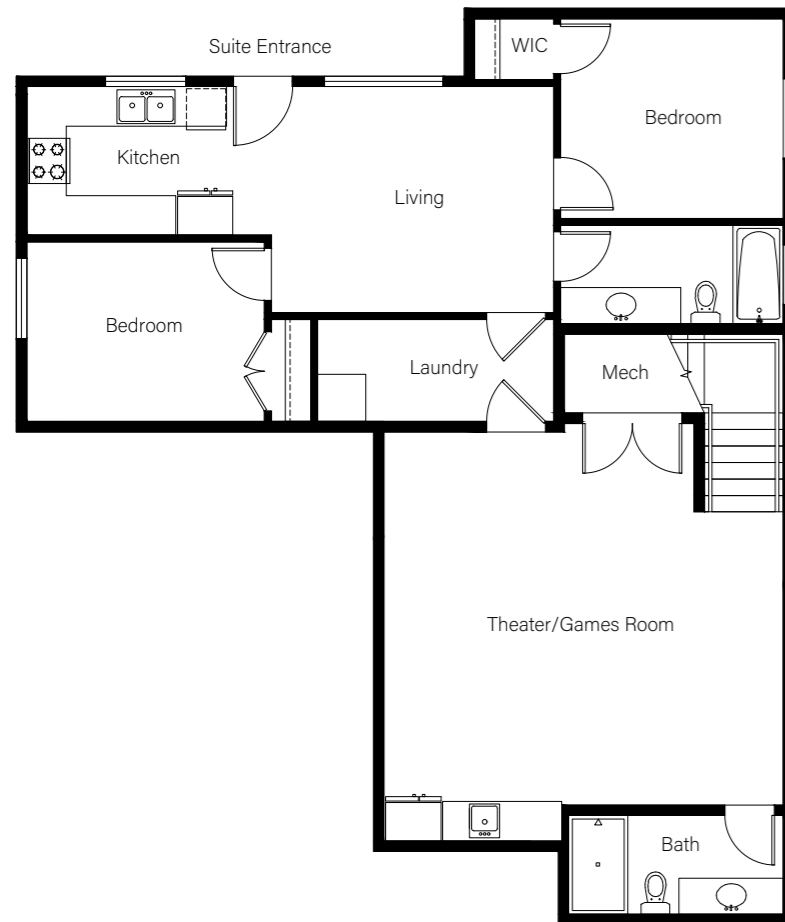
The developer, Paddington Properties (Cameron) Ltd. reserves the right to substitutions and modifications. All dimensions and sizes are approximate. Floor plans are based on initial design drawings. Square footage, room sizes, and features may vary due to specific conditions, local zoning bylaws or design improvements that may result in modification or changes without notice. Patio and deck sizes will vary by location.

Lot 4 Classic Beige Exterior Style

6 bedrooms ▪ 5.5 bathrooms ▪ Flex spaces ▪ 3 Car Garage ▪ Suite
 Lot size: 6,000 sq.ft. ▪ Floorspace: 4,715 sq.ft.

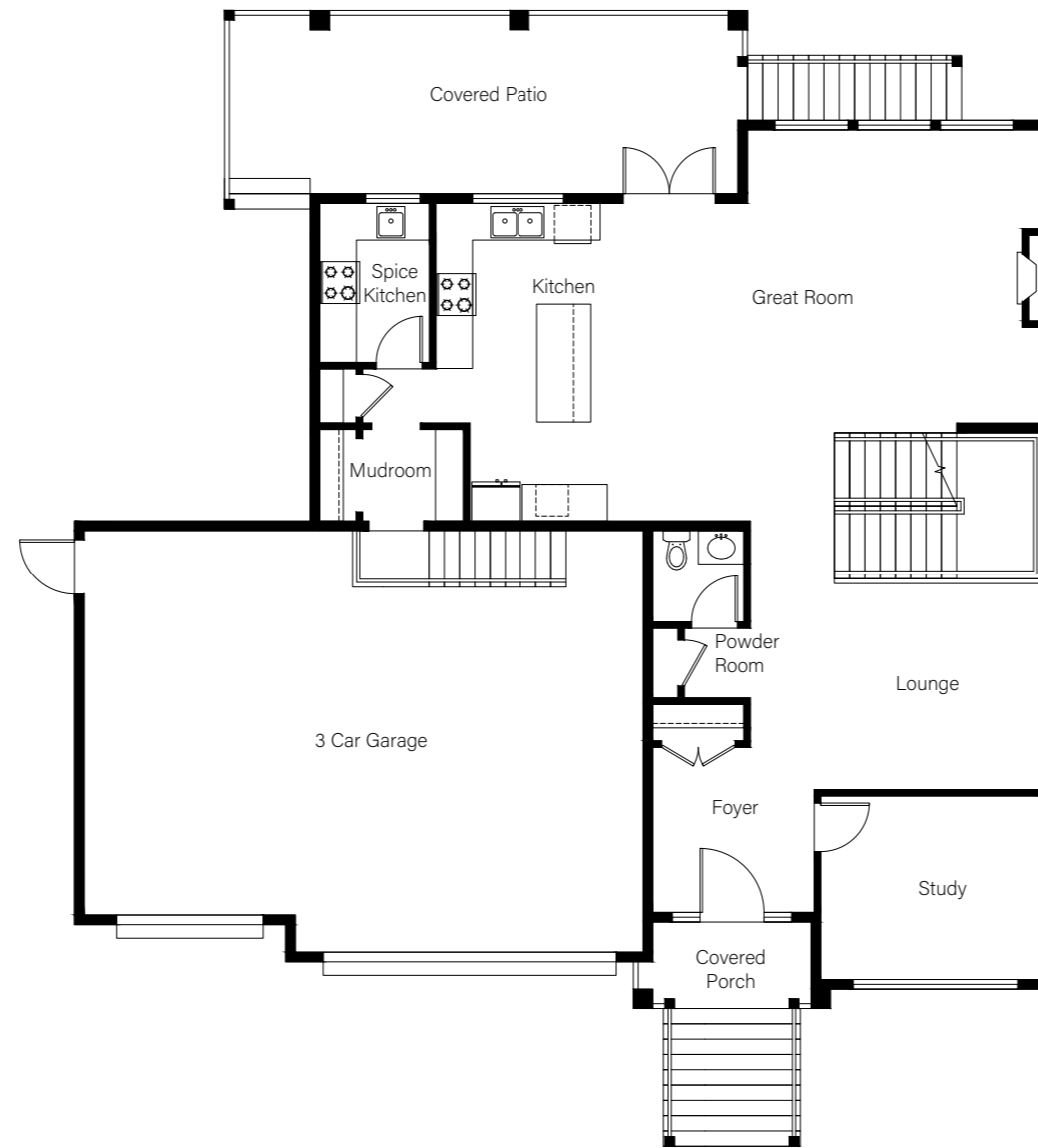
CAMERON

11037 243B Street



Finished Basement

Suite: 720 sq.ft.
 Theatre/Games Room: 615 sq.ft.



Main Floor

Living: 1,220 sq.ft.
 Garage: 730 sq.ft.



Upper Floor

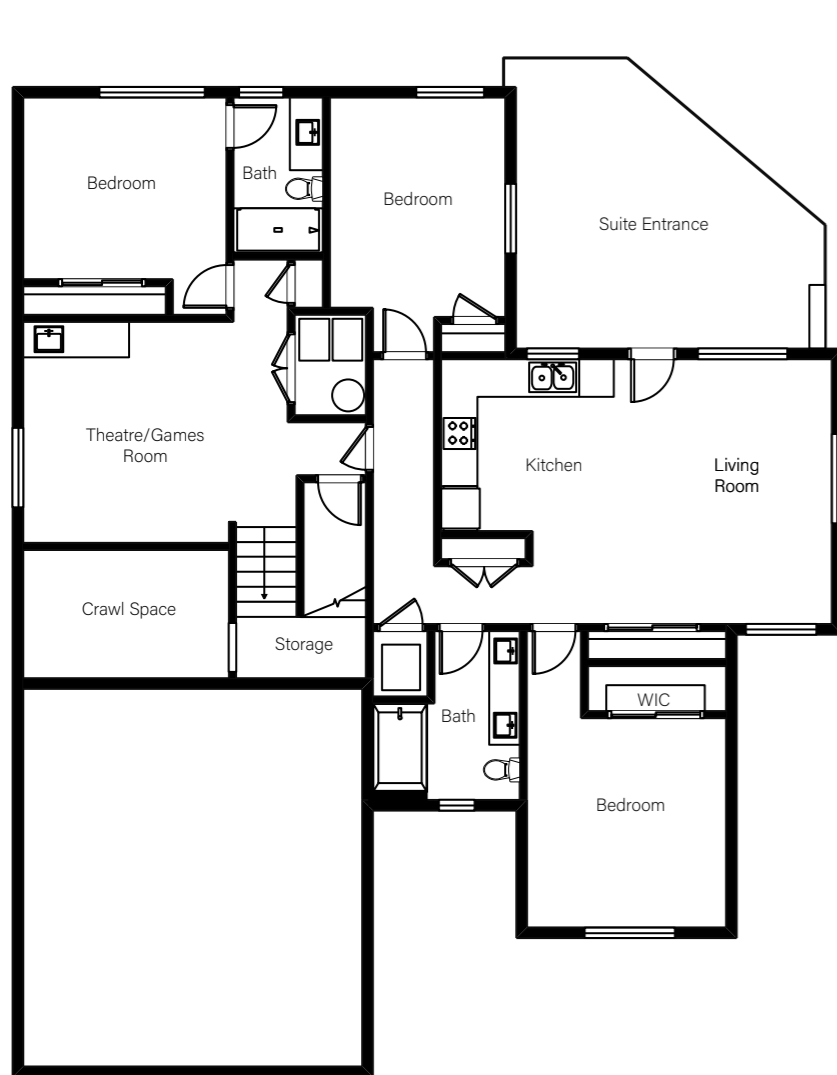
1,430 sq.ft.

Lot 8 Classic Beige Exterior Style

7 bedrooms ▪ 6.5 bathrooms ▪ Flex spaces ▪ Theatre/Games Room ▪ Suite
Lot size: 6,000 sq.ft. ▪ Floorspace: 4,670 sq.ft.

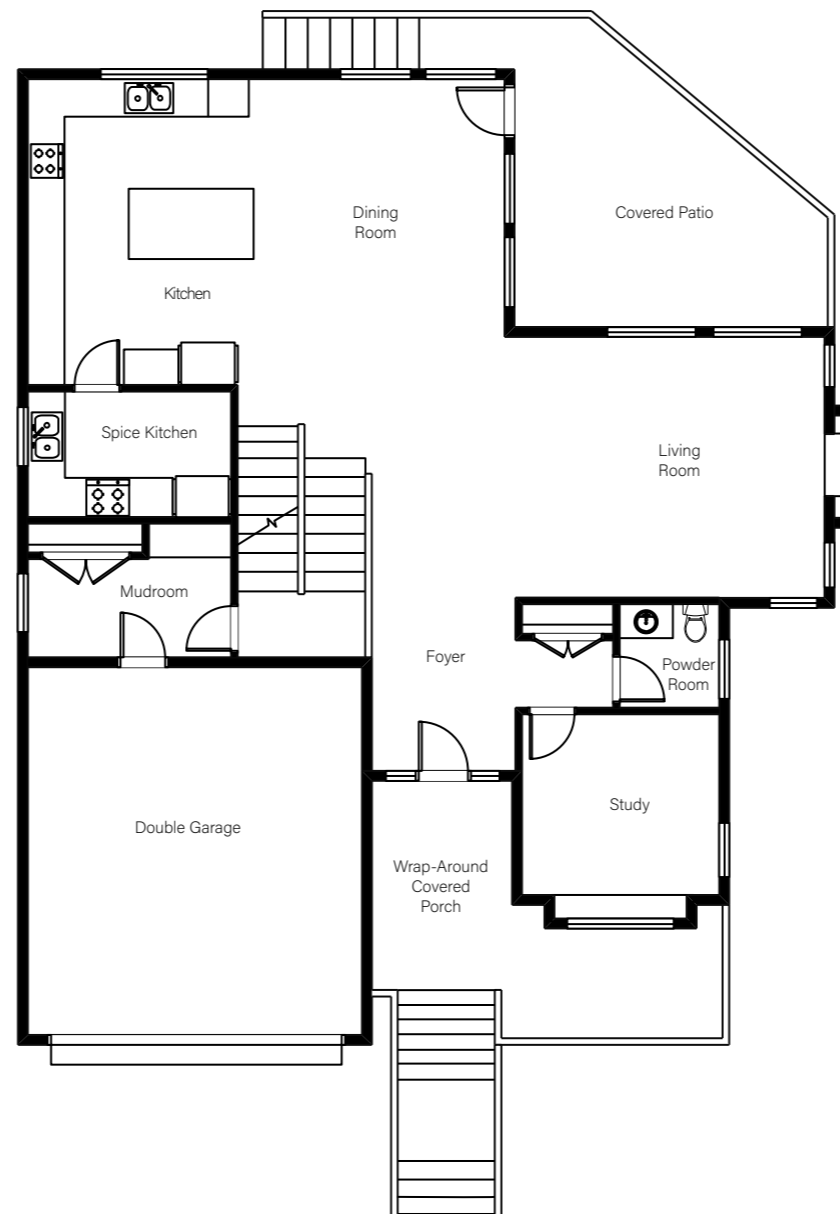
CAMERON

11070 243B Street



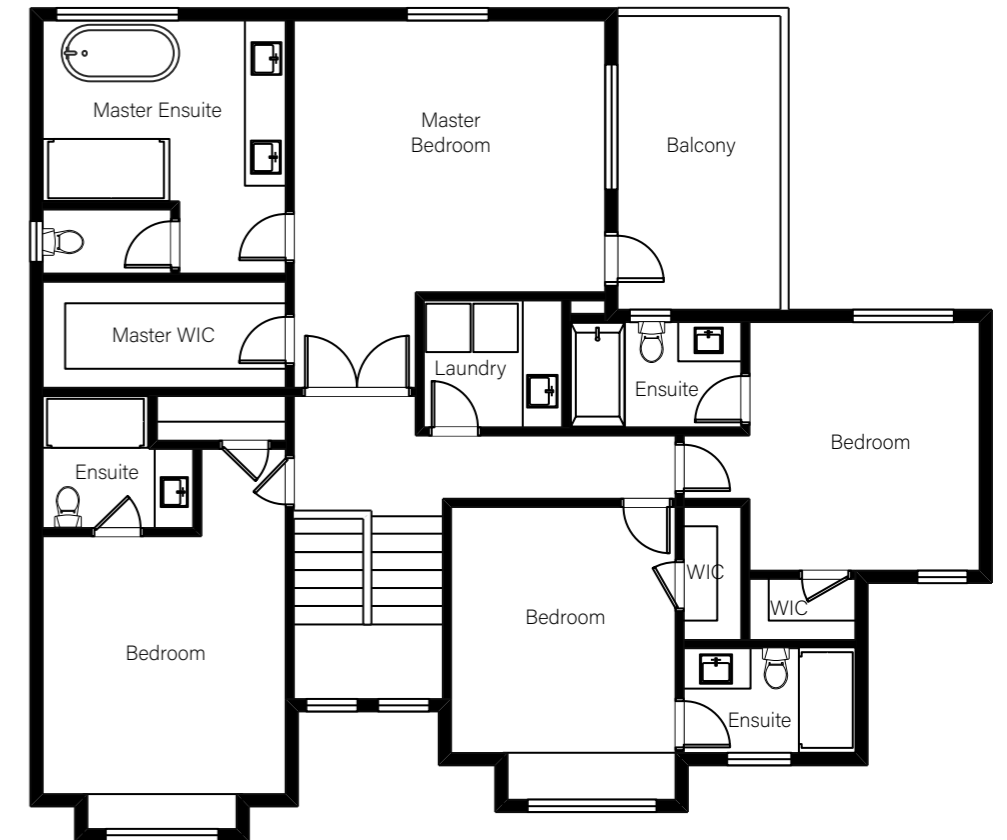
Finished Basement

Suite: 835 sq.ft.
Theatre/Games Room: 525 sq.ft.



Main Floor

Living: 1,480 sq.ft.
Garage: 440 sq.ft.



Upper Floor

1,365 sq.ft.

Lot 12 Classic Beige Exterior Style

7 bedrooms ▪ 6.5 bathrooms ▪ Flex spaces ▪ Theatre/Games Room ▪ Suite
 Lot size: 6,000 sq.ft. ▪ Floorspace: 4,910 sq.ft.

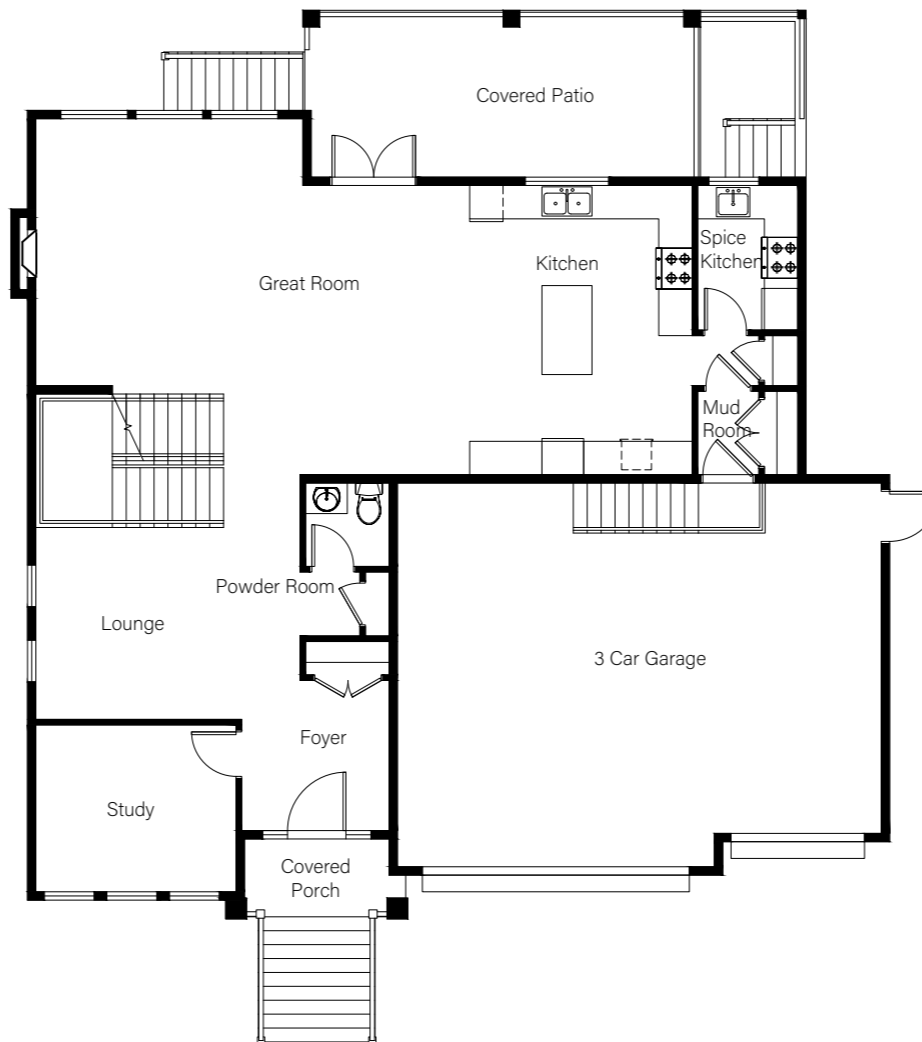
CAMERON

11026 243B Street



Finished Basement

Suite: 835 sq.ft.
 Theatre/Games Room: 620 sq.ft.



Main Floor

Living: 1,330 sq.ft.
 Garage: 700 sq.ft.



Upper Floor

1,430 sq.ft.